

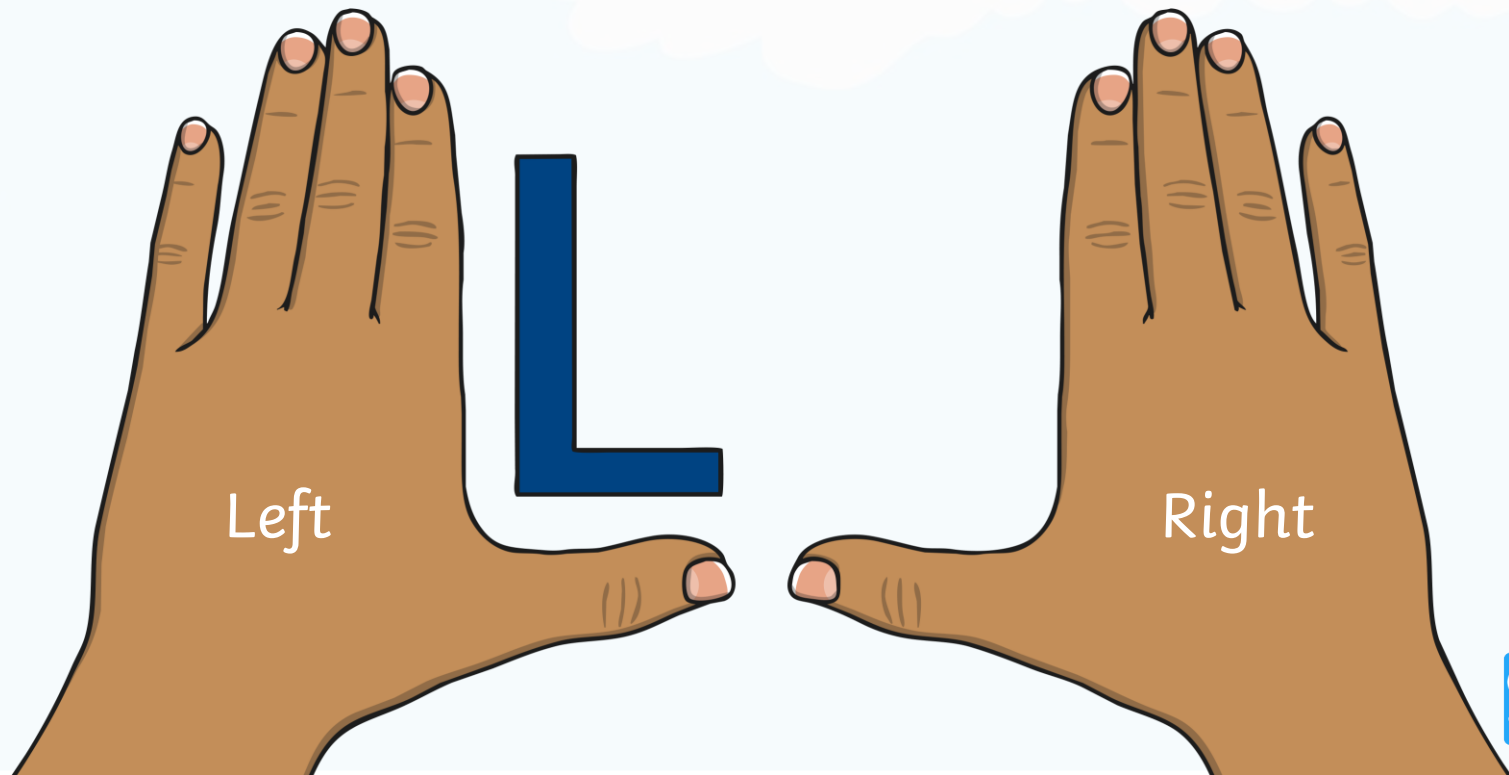
Position and Direction

Warm-Up



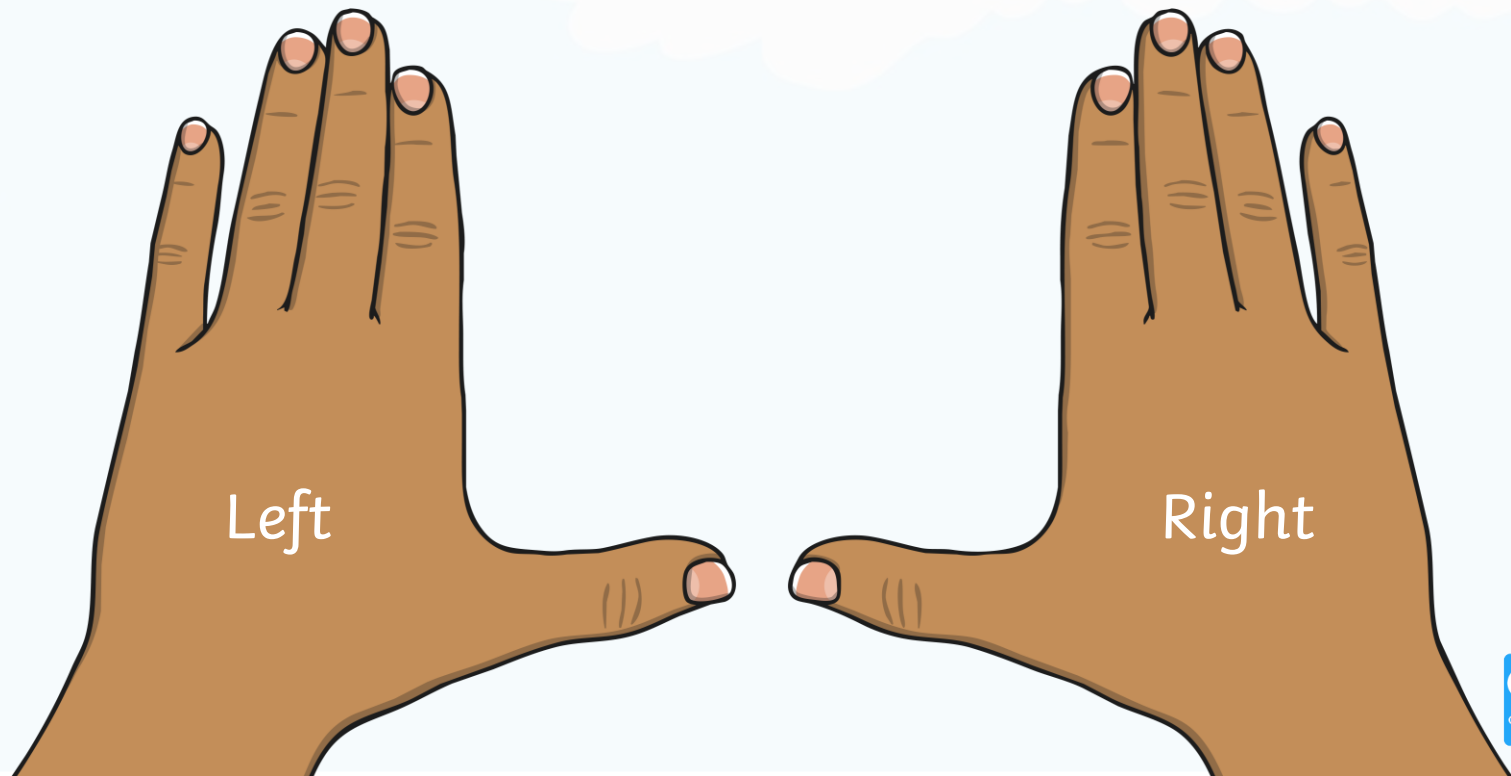
Put your left hand in the air!

The hand that makes an 'L' shape is your left hand.



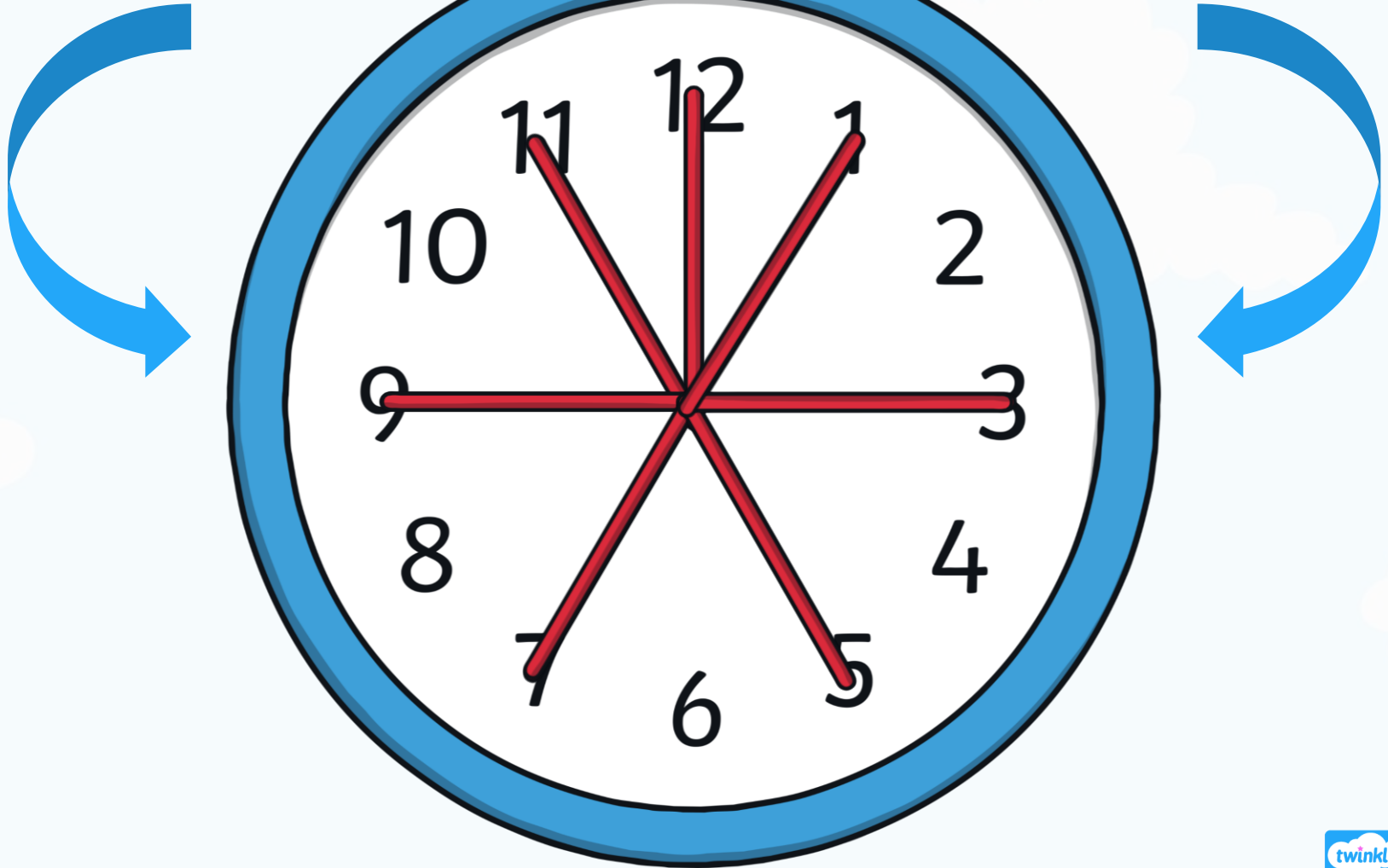
Put your right hand in the air!

The hand that does not make an 'L' shape is your right hand.

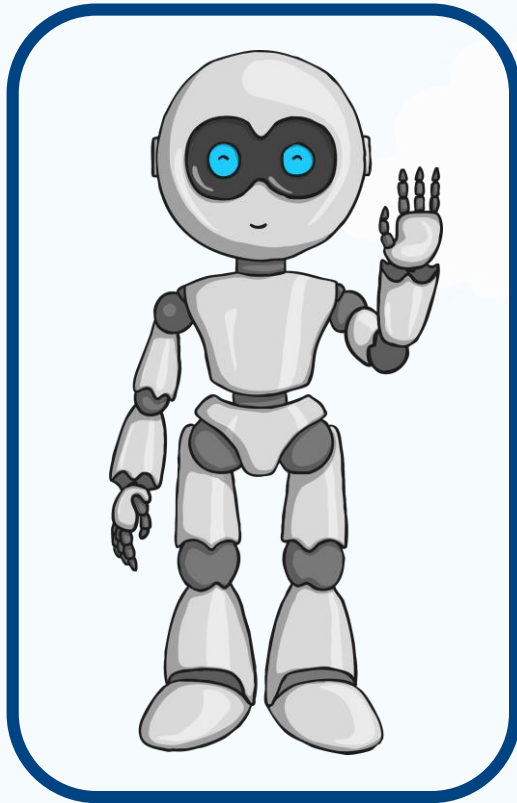


Anti-clockwise

Clockwise

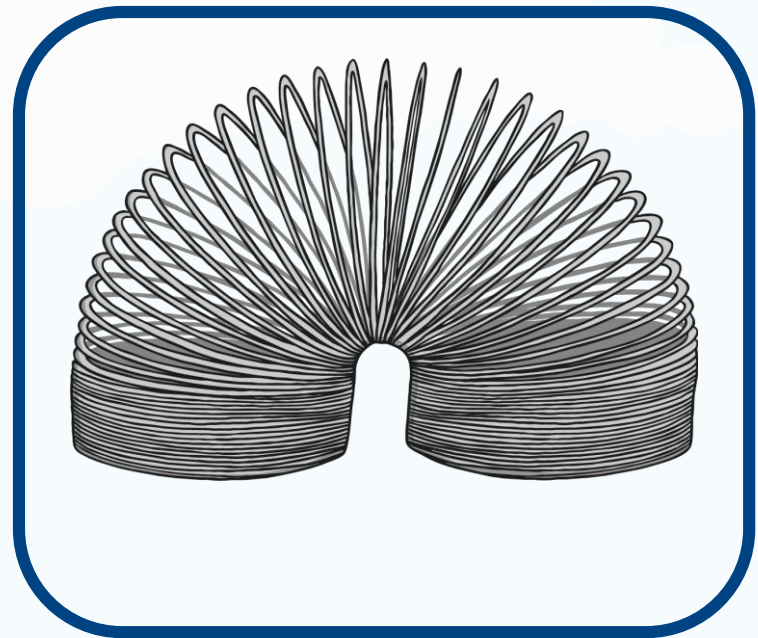
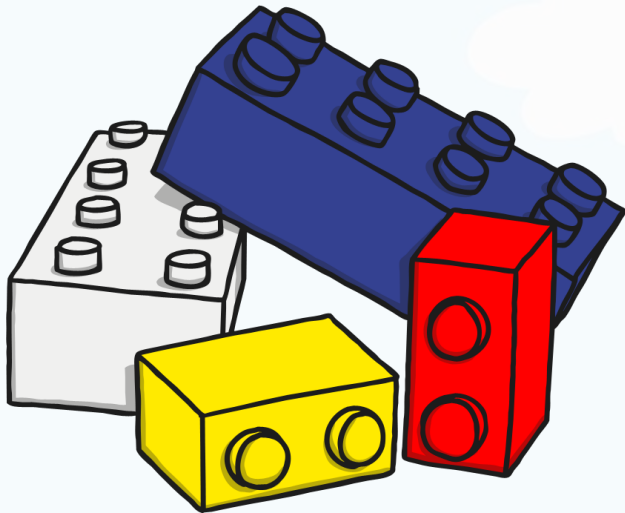


Which toy is on the left?



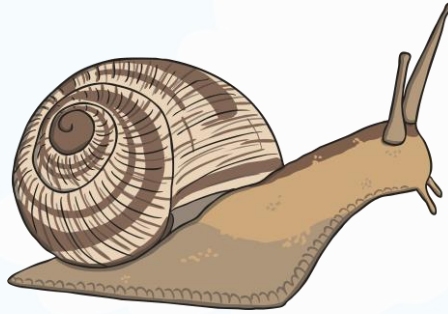
Show answer

Which toy is on the right?

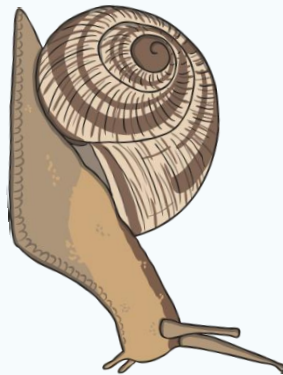


Show answer

Here is a snail.

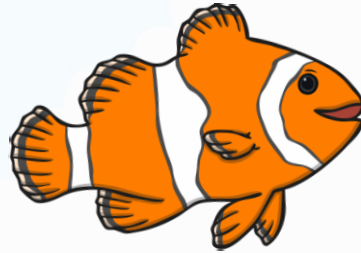


The snail has moved 1 whole turn anti-clockwise.
Which picture below shows the snail now?

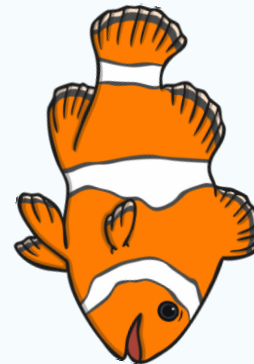
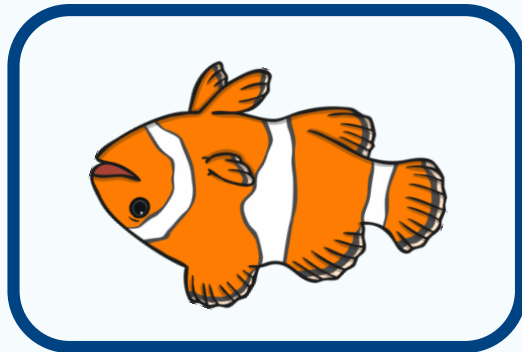


Show answer

Here is a fish.



The fish has moved a half turn clockwise.
Which picture shows the fish now?



Show answer

Where is the cheeky parrot?



Show answer

On top of the cage.

Where is the cheeky parrot?



Show answer

Under the cage.



Where is the cheeky parrot?



Show answer

Next to the cage.



The cheeky parrot wants to go home to the boat. How should he get there?

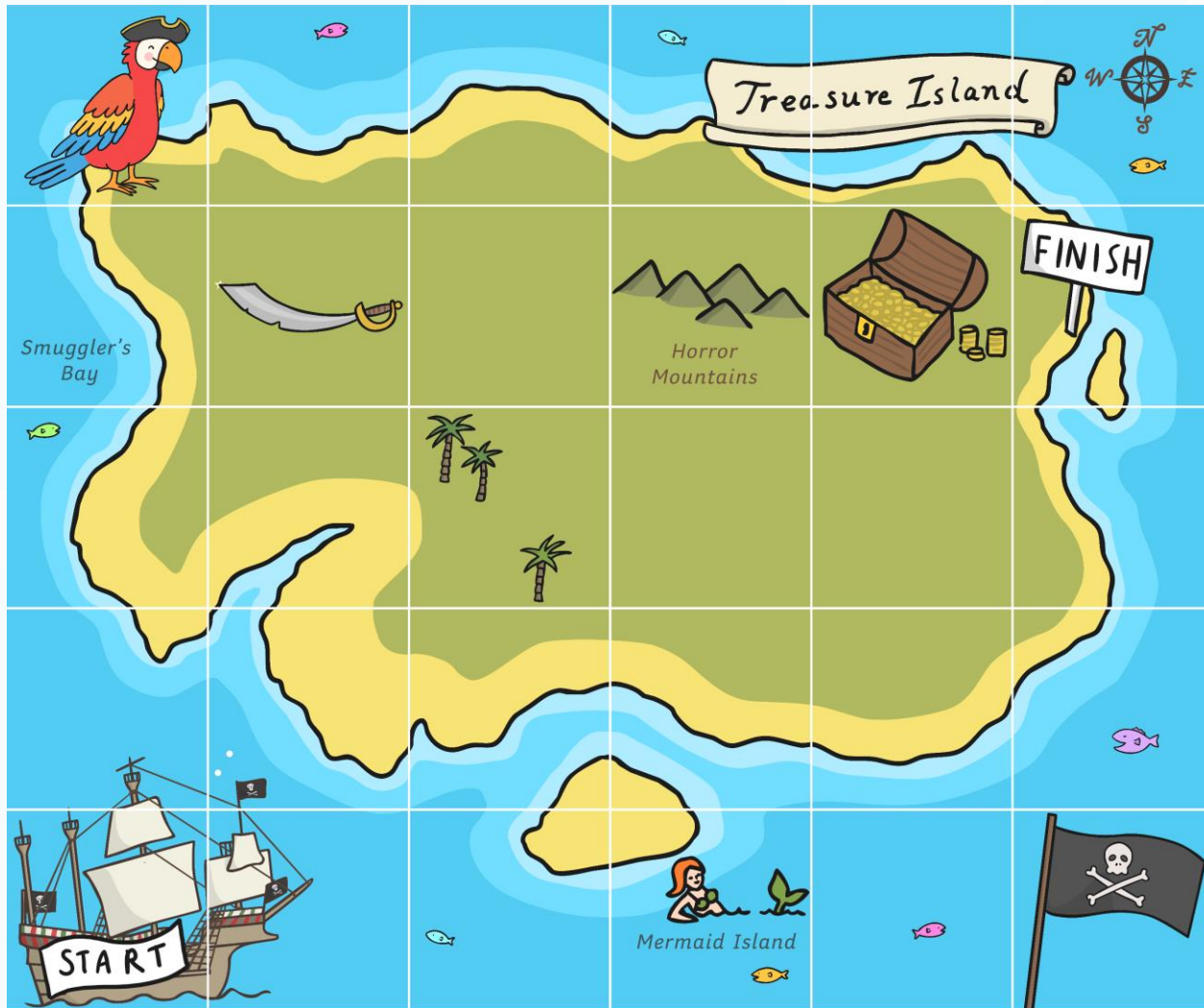


The parrot should fly down four squares to the boat.

Show answer



The cheeky parrot wants to find the treasure. How should he get there?

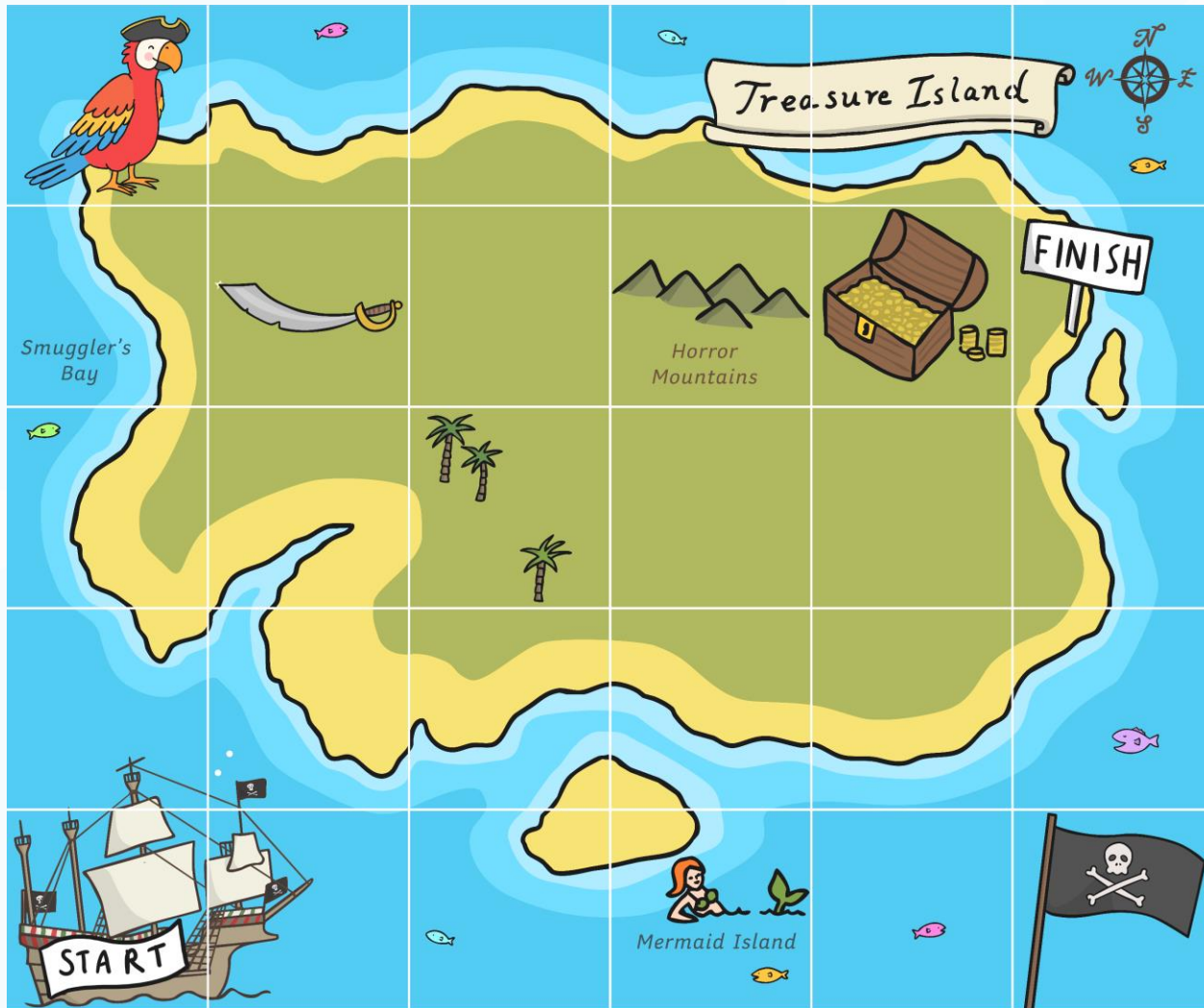


The parrot should fly right four squares and then down one square.

Show answer



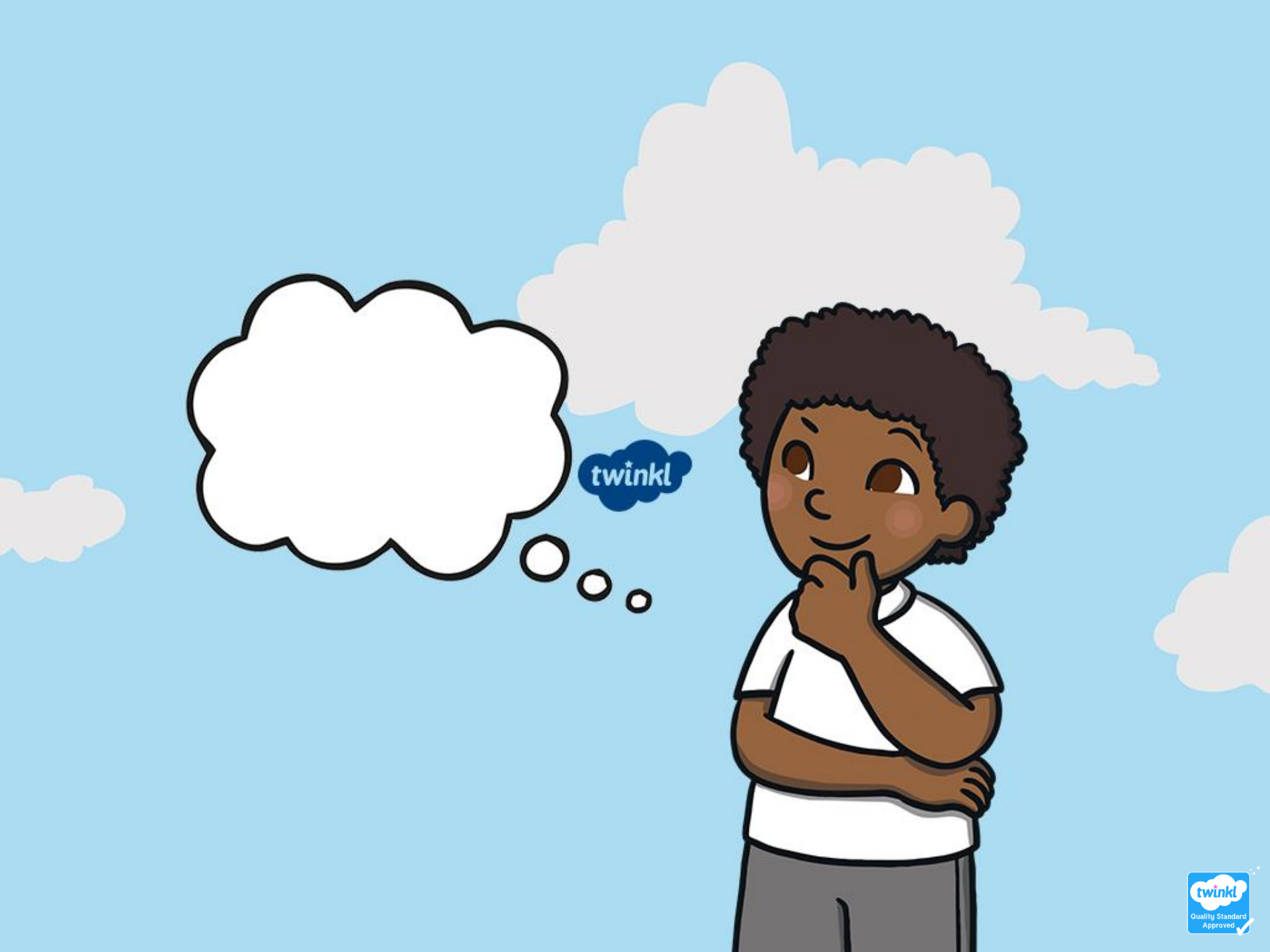
The cheeky parrot wants to visit the mermaid. How should he get there?



The parrot should fly right three squares and then down four squares.

Show answer





twinkl